



GAT MONTHLY MEMBERSHIP PROGRESS REPORT

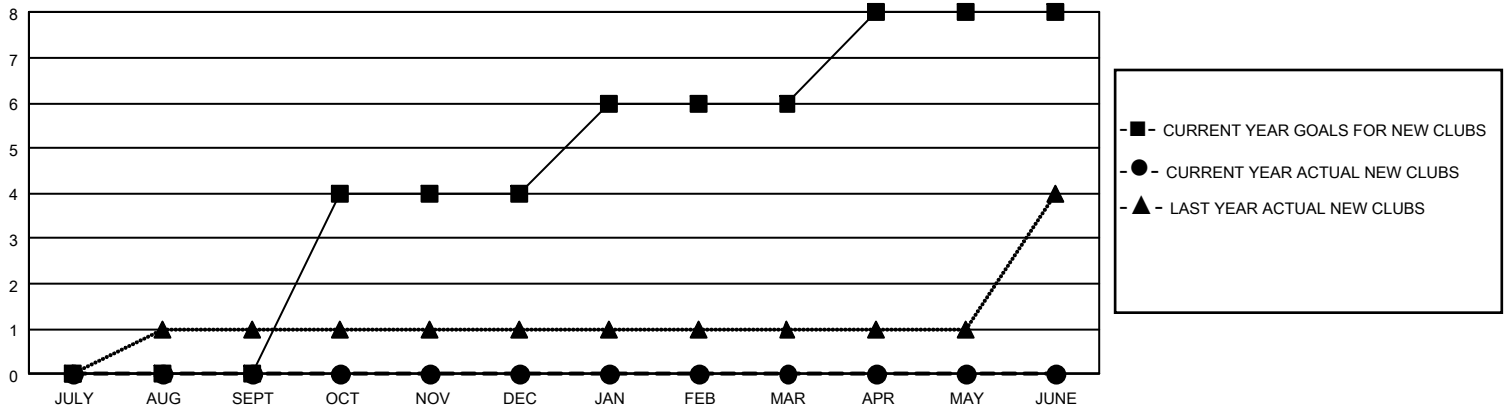
Results as of: 7/31/2021

GMT Constitutional Area 2, Group D

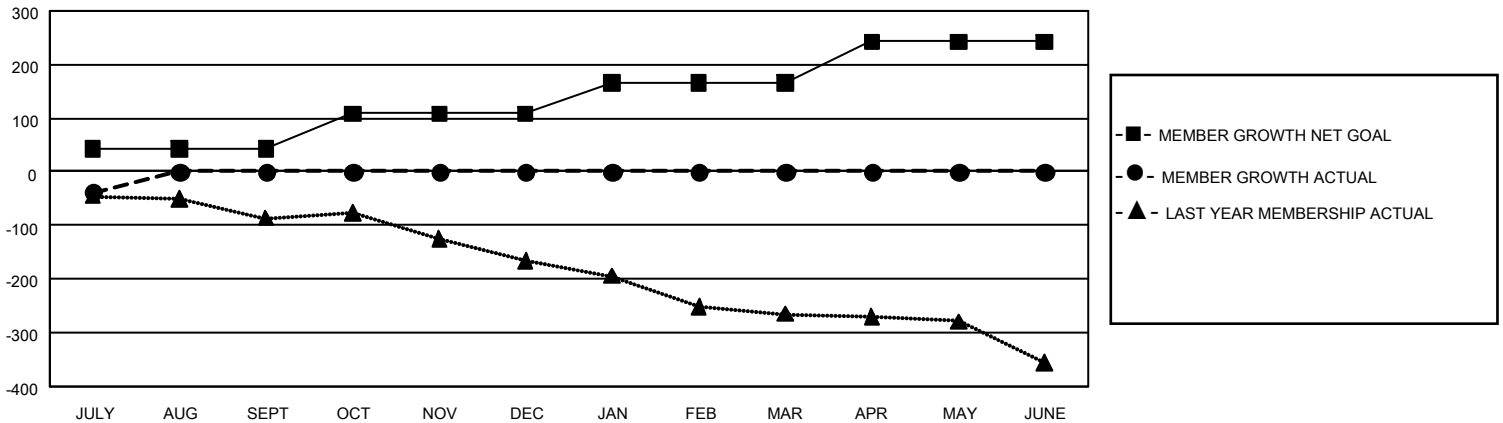
REPORT DOES NOT INCLUDE CLUBS IN UNDISTRICTED AREAS.

Clubs				Members			
RESULTS FOR 2021-2022				RESULTS FOR 2021-2022			
QUARTER	NEW CLUB GOAL	NEW CLUBS	DROPPED CLUBS	QUARTER	MEMBER GROWTH NET GOAL	MEMBER GROWTH ACTUAL	DROPPED MEMBERS ACTUAL (including transfers)
JULY/AUG/SEPT	0	0	4	JULY/AUG/SEPT	42	40	67
OCT/NOV/DEC	12	0	0	OCT/NOV/DEC	67	0	0
JAN/FEB/MAR	6	0	0	JAN/FEB/MAR	57	0	0
APR/MAY/JUNE	6	0	0	APR/MAY/JUNE	77	0	0

GOALS AND ACTUAL NEW CLUBS CUMULATIVE



GOALS AND ACTUAL MEMBERS CUMULATIVE



DROPPED CLUBS: 4	11 CLUBS OF 363 ADDED 1 OR MORE NEW MEMBERS	GENDER DISTRIBUTION MALE 5,112 (71.47%) FEMALE 2,041 (28.53%)
DROPPED MEMBERS DECEASED 7 CLUB CANCELLED 8 OTHER 52 TOTAL 67	CLICK HERE FOR CUMULATIVE MEMBERSHIP DATA	TOTAL FAMILY UNIT MEMBERS 1,223 FAMILY MEMBERS PAYING HALF DUES 623